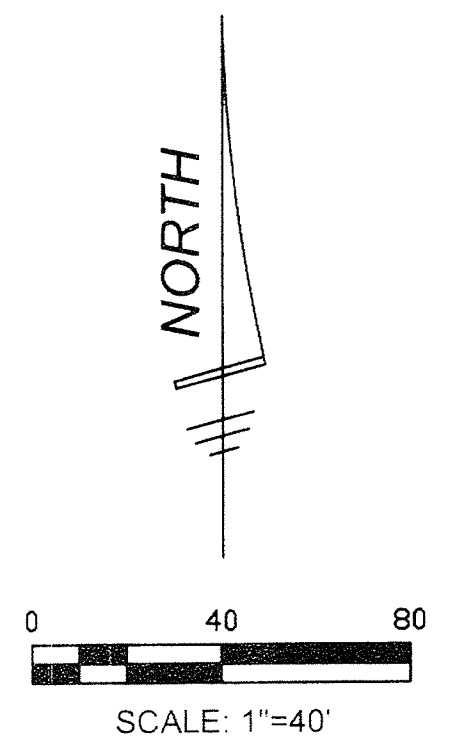
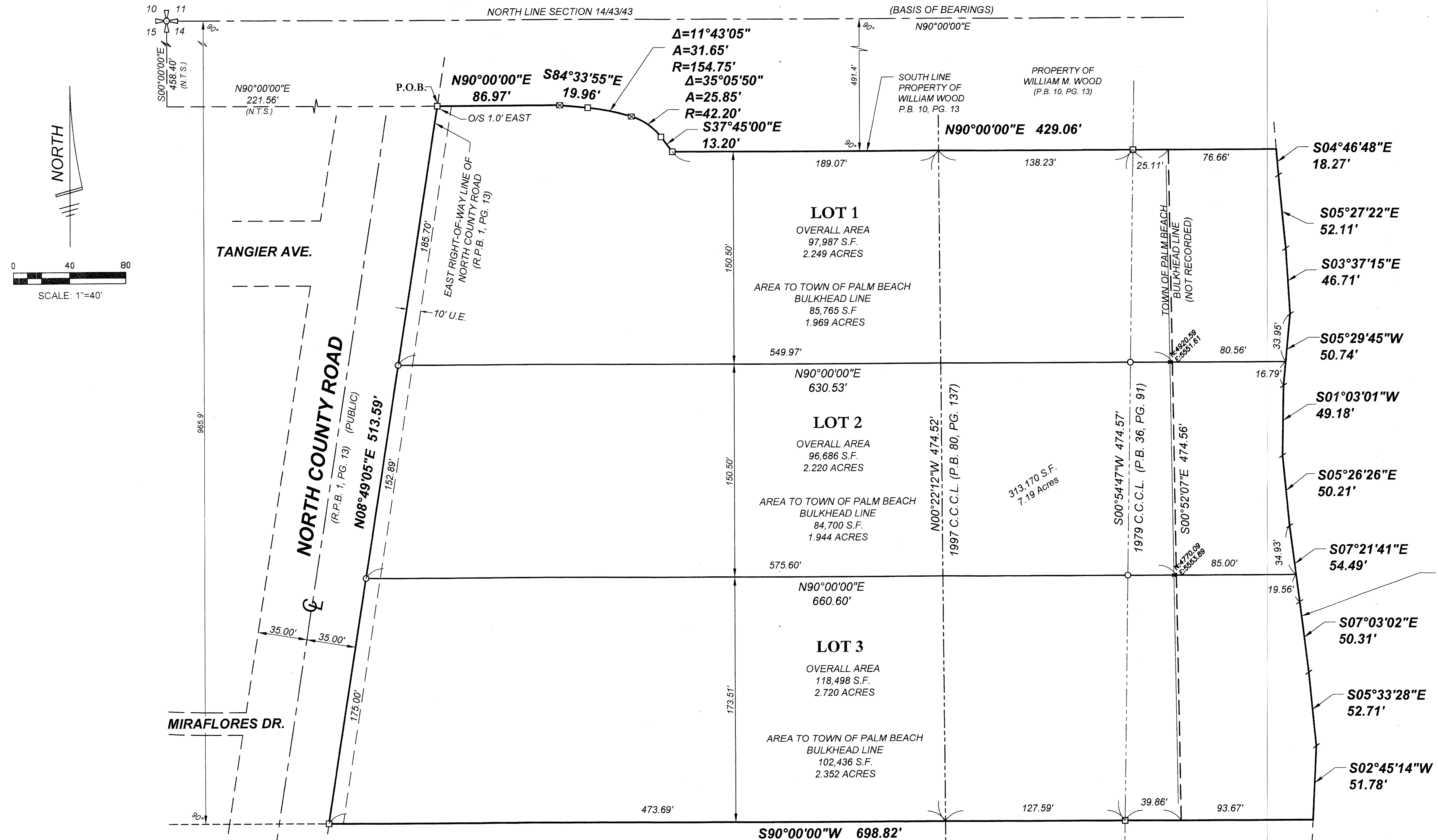


NORTH COUNTY ROAD ESTATE PROPERTIES

BEING A REPLAT OF A PORTION OF PROPERTY OF WILLIAM M. WOOD
 PLAT BOOK 10, PAGE 13, PALM BEACH COUNTY RECORDS
 LYING IN SECTION 14, TOWNSHIP 43 SOUTH, RANGE 43 EAST,
 TOWN OF PALM BEACH, PALM BEACH COUNTY, FLORIDA

126



NOT PLATTED

THIS INSTRUMENT PREPARED BY:
CRAIG L. WALLACE IN THE OFFICE OF
 WALLACE SURVEYING CORPORATION
 5563 VILLAGE BOULEVARD,
 WEST PALM BEACH, FLORIDA 33407

Subdivision 1-2016

**NORTH COUNTY ROAD
 ESTATE PROPERTIES**

WALLACE SURVEYING
 CORP. LICENSED BUSINESS # 0000

FIELD: B.M.	JOB NO.: 04-1453.25	F.B. PB193 PG. 79
OFFICE: N.I.	DATE: 04/21/2016	DWG. NO. 04-1453PLAT
CK'D: C.W.	REF: 04-1453.DWG	SHEET 2 OF 2